

HOW TO IMPROVE MY THEMATIC EXHIBIT?



Sharing personal experiences

By

TONO DWI PUTRANTO

EXHIBIT'S TITLE AND STRUCTURE DEVELOPMENT

- The Kingdom of Lions (2004)
- A Journey of an Old King from Serengeti (2009)
- A Journey of an Old King from Serengeti (2011)
redesign development
- Journey of an Old King from Serengeti (2014)
redesign development, paper size square
- Journey of an Old King from Serengeti (2015)
improve development, materials
- Journey of an Old King from Serengeti (2016)
improve plan, development, materials



EXHIBIT'S MILESTONES

NATIONAL LEVEL:

- Surabaya 2004 (LS)
- Bandung 2006 (LS)

INTERNATIONAL LEVEL

- Taipei 2006 (LS) Experimental class 3 frame
- Bangkok 2007 (LS)
- Taipei 2008 (LS)
- Jakarta 2008 (LS)
- Philakorea 2009 (V)
- Joburg 2010 (V)
- Indipex 2011 (LV) 5 frame
- Philakorea 2014 (G + SP) 8 frame
- Singapore 2015 (G) 8 frame
- China 2016 (LG) 8 frame



TYPICAL QUESTION

- I HAVE A LOT OF RARE ITEMS,
WHY MY THEMATIC EXHIBIT GOT LOW MEDAL?

- I CHANGE A LOT MY EXHIBIT,
WHY I RECEIVED THE SAME MEDAL?

KEY FOR ANSWER

- SELF-EVALUATION

- LEARN FROM HIGH AND MEDIUM LEVEL MEDAL
THEMATIC EXHIBIT

SELF-EVALUATION

Did I know the thematic exhibit criteria of evaluation?

• Title and Plan	15	35	Treatment
• Development	15		
• Innovation	5		
• Philatelic Knowledge	15	30	Knowledge
• Thematic Knowledge	15		
• Condition	10	30	Condition & Rarity
• Rarity	20		
• Presentation	5	5	Presentation
• TOTAL	100	100	



SELF-EVALUATION

Did I follow the guide for exhibiting in thematic class?

- Learn GREV and SREV Thematic
- Use appropriate material
- Use variety material
- Choose unique title
- Developing the plan
- Connection between thematic text and material
- Better presentation



LEARN FROM HIGH AND MEDIUM LEVEL MEDAL THEMATIC EXHIBIT

- Learn how they choose a title
- Learn how they make a plan
- Learn how they develop the plan
- Learn how they use variety of philatelic material
- Learn how they describe the philatelic material
- Learn how they show the thematic knowledge
- Learn how they make presentation of the exhibit
- **ATTENDING JURY CRITIQUE SESSION**
and also learn from critique given to OTHER exhibits (Not only our exhibit)



PRESENTATION

2.1 Physical Anatomy - Body

THE KING'S CLOSE UP



Stamp on Stamp



Imperforate
Progressive Proof



Overprinted, Corner Margin

The male Lions can reach a length of 2.50 m (8 ft) and a height of 1.20 m (4 ft) at the shoulder. The females are somewhat smaller with a length of 1.70 m (5.5 ft) and a height of 1.05 m (3.5 ft) at the shoulder. The weight is between 150 to 250 kg (330-550lb) for the males and 120-180 kg (260-400lb) for the females. On average a lion lives 15 years.



Error, Overprint without
Silver Block



Error, Shifted Overprint
Silver Block



Error, Inverted Overprint



Fancy Cancel, Registered Cover, Sent from RED LION Pennsylvania to Highland Indiana

2.2 Why I am different with my daughter? - Body

The male Lions can reach a length of 2.50 m (8 ft) and a height of 1.20 m (4 ft) at the shoulder. The females are somewhat smaller with a length of 1.70 m (5.5 ft) and a height of 1.05 m (3.5 ft) at the shoulder.



Pictorial sheet margin

The weight is between 150 to 250 kg (330-550lb) for the males and 120-180 kg (260-400lb) for the females. On average a lion lives 15 years.



Stamp on stamp



Imperforate progressive plate
proof stage 4, in this stage, only
special color not yet printed



Corner margin stamp, overprinted REPUBLIQUE
RWANDAISE CONTRE LA FAIM (Republic
Rwanda action against hunger)



Variety, overprint black with missing
overprint silver block color



Variety, shifted overprint silver block
color, with missing overprint black color

Visually, the male lion is highly distinctive and is easily recognized by its mane.



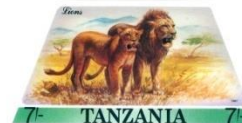
Variety, inverted overprint black
color



Issued stamp, tete-beche



Proofs by the Format Process



Format International Security Printers Ltd
Parkhouse Estate, Parkhouse Street, London SE5, Telephone 01-703 5098
Cables Formpro, London SE5

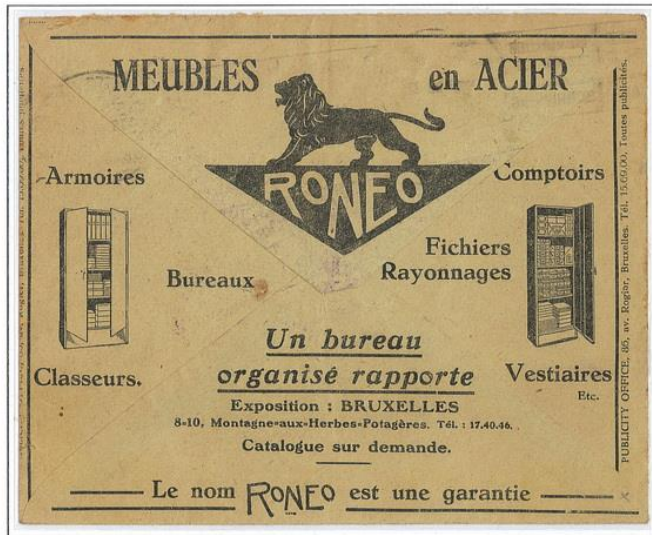
Imperforate proof mounted on card
from Format International Security Printers.

Lions tend to vary in size depending on their environment and area, for instance, lions in Southern Africa tend to be about 5 percent heavier than those in East Africa, in general. Lions in captivity tend to be larger than lions in the wild.

PRESENTATION

2.1 I am different with my daughter - Body

Visually, I am as a male lion is highly distinctive and is easily recognized by our mane



☆☆

Belgium postage free advertising official cover from check bureau, used 19.11.1932

Lions tend to vary in size depending on their environment and area

my relatives lion in Southern Africa tend to be about 5 percent heavier ...



... than those in Central and East Africa, in general



EMPIRE CENTRAFRICAINE ovpt. 1976

The weight is between 150 to 250 kg for the males and 120-180 kg for the females



Variety, overprint black with missing overprint silver black color



Variety, shifted overprint silver black color, with missing overprint black color



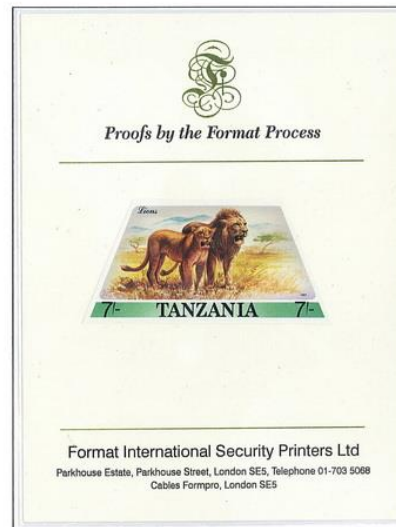
Variety, overprint silver black color, with shifted overprint black color



Variety, inverted overprint black color

SELF LEARNING IN MY HOMELAND

The male lions can reach a length of 2.50 m and a height of 1.20 m at the shoulder. The females are somewhat smaller with a length of 1.70 m and a height of 1.05 m at the shoulder



Tanzania 1987, presentation card for seeking allowance to produce the stamp by Format International Security Printers

Lions in captivity tend to be larger than lions in the wild



Pictorial rubber commemorative postmark

PRESENTATION

2.1 Physical Anatomy - Mane

Only adult male lions have manes. They have a large, bushy mane, makes them look even bigger than they are. This helps them to attract females and scare away other males. The mane may also protect the face and neck when they fight with other males.



Imperforate, Pair



Commemorative Pictorial Postmark



Postal Stationery Cover, Germany, local mail Köln 1895

2.2 Why I am different with my daughter? - Mane

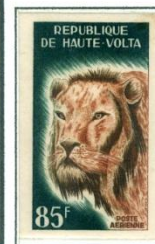
Only adult male lions have manes. They have a large, bushy mane, makes them look even bigger than they are. This helps them to attract females and scare away other males. The mane may also protect the face and neck when they fight with other males.



Advertising postal stationery cover, imprinted on private order, Bavaria, local mail Köln 1895



The mane of the adult male lion, unique among cats, is one of the most distinctive characteristics of the species.



Proof imperforate



Female lion doesn't have mane.

Male lion with long hairy mane



Issued stamp, different value and marginal design



Commemorative pictorial postmark

← Essay Artist's mock up using Polaroid photo of object with overlay for lettering and marginal designs. Value of issued stamp and marginal design were changed.

The mane makes the lion appear larger, providing an excellent intimidation display; this aids the lion during confrontations with other lions.

PRESENTATION

2.1 I am different with my daughter - Mane

Only adult male lions have manes



*** Bavarian 2 Pfennig advertisement stationery cover, imprinted on private order, local mail Köln 1895

I have a large, bushy mane, makes me look even bigger than I am



** Tanzania 1993, presentation proof from agency printer международная книга Moscow. This proof use different paper and different perforation (11 x 11) compare to normal issuing stamp

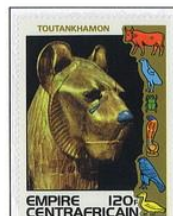


*** Essay Artist's mock up using Polaroid: photo of object with overlay for lettering and marginal designs. Value of issued stamp and marginal design were changed

I have long hairy mane ...



Female lion doesn't have mane



Issued stamp, different value and marginal design

... make me appear larger ...



... providing an excellent intimidation display



Issued stamp, perf. 12 x 12½

The mane helps us to attract females and scare away other males. The mane may also protect my face and neck when fight with other males

The mane of the adult male lion, unique among cats, is one of the most distinctive characteristics of the species



Trial color proof in brown

PRESENTATION

3.2 On the Art of Eating - Preys



Error on Second Row Overprint on the Middle Stamp,
"Royaume" instead of "Burundi"



The lion is the top predator in its environment. A lion will eat beetle or a giraffe, and most anything in between. Lions have preferred prey, though. Their everyday diet consist of impala, gazelle, eland and zebra, which are common species that are large enough to feed a group of hungry hunters yet no so big as to exhaust the hunters or endanger their lives.



Pictorial Advertising Meter, Registered Commercial Cover "de Leeuw" coffee with Pictorial Advertising Meter Mark Lion and its Prey, Sent from Semarang Ned. Indie (Now Indonesia) to Toronto Canada, 1932

3.1 Hunting experience - Preys

FEEL THE POWER

The lion is the top predator in its environment. A lion will eat beetle or a giraffe, and most anything in between. Lions have preferred prey, though. Their everyday diet consist of kudu, impala, gazelle, eland and zebra, which are common species that are large enough to feed a group of hungry hunters yet no so big as to exhaust the hunters or endanger their lives.



Error on Second Row Overprint on the Middle Stamp,
"Royaume" instead of "Burundi"



The lioness watching their prey, impala

... they have to be close to their prey before starting the attack ...



... they stalk as close to their prey as they can, until about 20 meters and then launch an attack ...



... the lioness catches the prey



They take advantage of factors that reduce visibility; many kills take place near some form of cover or at night.



Pictorial advertising red metermark

Lion give the deadly bite ...



... on the neck of prey

Kudu is one of favorite lion's prey



Lion catch Kudu



Color trial proof for 3 basic colors, in the sequence : (1) Black, (2) Repetition color Black, (3) Blue, (4) Brown, and (5) combining 3 colors, Black, Blue and Brown.

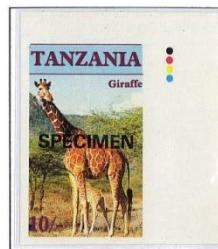
PRESENTATION

3.1 My hunting experience - Diet

We are the top predator in its environment



We will eat pangolin or a giraffe, and most anything in between



... impala ...



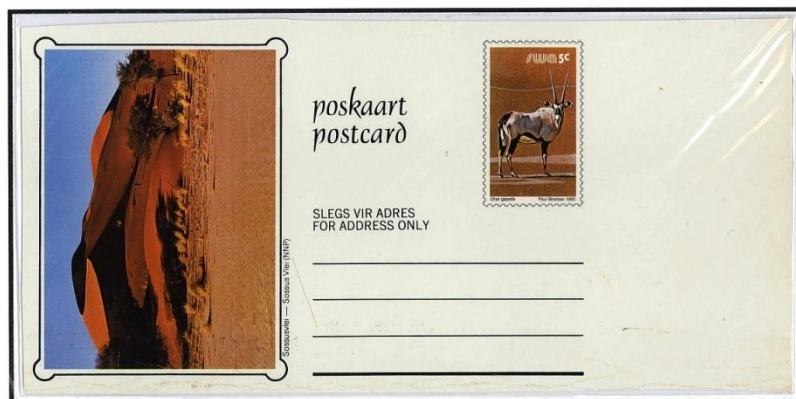
Error on Second Row Overprint on the Middle Stamp, "Royaume" instead of "Burundi"

... kudu ...



Color trial proof for 3 basic colors, in the sequence : (1) Black, (2) Blue, (3) Brown, and (4) combining 3 colors, Black, Blue and Brown

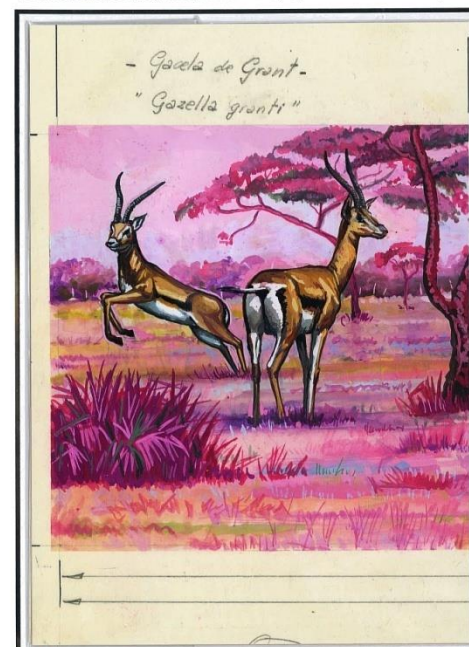
... oryx ...



South West Africa 1980, proof 5 c Oryx stationery card, wide margin on the right side, designed by Paul Bosman

FEEL THE POWER

We have preferred prey, though. Their everyday diet consist of Gazelle, ...



*** Burundi 1971, adopted original drawing of 3F Gazelle stamp, watercolor on cardboard. **UNIQUE**



Issued stamp

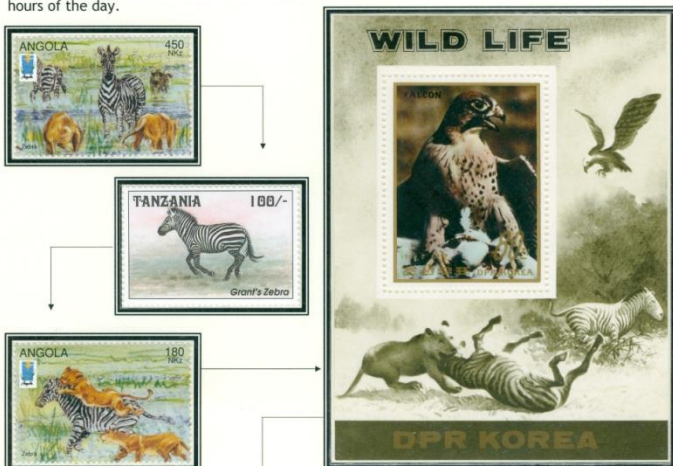
... and zebra, which are common species that are large enough to feed a group of hungry hunters like us yet no so big as to exhaust us or endanger our lives



PRESENTATION

3.2 On the Art of Eating - Feeding

Lions do not like dense forests. The favorite time for hunting is in the early morning, the coolest hours of the day.



Souvenir Sheet

As soon as lions bring down an animal, the competition for food begins. The dominant males eat first, taking as much as their bellies will hold. Next, the adult females fight for share. The cubs eat last if they are old enough to feed on their own. When the lions have finished eating, scavengers such as vulture swoop in and eat any leftovers.



Deluxe Sheet



Issued Stamp, Different Color



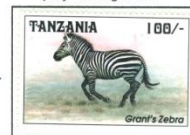
3.1 Hunting experience - Feeding

Lions do not like dense forests. The favorite time for hunting is in the early morning, the coolest hours of the day.

Several lionesses work together and encircle the herd from different points ...



... on sudden break, the prey running fast ...



... the attack is short and powerful; they attempt to catch the victim with a fast rush and final leap ...



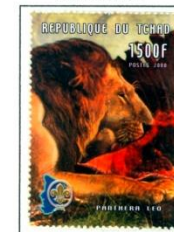
... the prey usually is killed by strangulation, which can cause cerebral ischemia or asphyxia (which results in hypoxemic, or "general," hypoxia) ...

... smaller prey, though, may simply be killed by a swipe of a lion's paw ...



Issued stamp, different color

Male lion eat first; and then followed the lioness and the cub eat latest.



Deluxe Sheet



One big prey like zebra can fulfill all the pride's hunger



PRESENTATION

3.1 My hunting experience - Feeding

Several lionesses work together and encircle the herd from different points ...



... on sudden break, the prey running fast ...



Specimen

... the attack is short and powerful; they attempt to catch the victim with a fast rush and final leap ...



... the prey usually is killed by strangulation, which can cause cerebral ischemia or asphyxia (which results in hypoxemic, or "general," hypoxia) ...



*** East Africa airgraph sent to New Port UK 1944

... if one prey down, we let the other prey gone ...



... we guard our prey from other intruder ...



My strong teeth can tear the meat easily

... all of us start surrounding the dead body of prey ...



... I roar a loud to call my relatives in pride ...



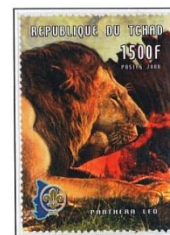
... they came to join the party together...



*** Italia 1921 Busta lettera Postale, sent from Roma to Milano



In 1941 the GPO introduced the Airgraph Service for messages between servicemen and civilians. The message was written onto a special form that was then given an identification number and photographed onto microfilm. The miniature photographic negative was flown to its destination. Sending 1600 airgraphs on microfilm weighed just 5 ounces compared to 50 pounds for the same number of letters. The original was retained by PO so that if they were shot down the message could be resent. The original was eventually destroyed



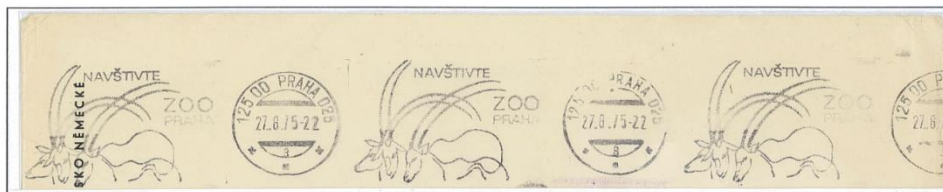
Male lion eat first and then followed the lioness and the cub eat latest

One big prey like zebra can fulfill all the pride's hunger

PRESENTATION

3.1 My hunting experience - Hunting technique

... we are watching patiently on the ground in the savannah, a group of antelopes, which attract our attention ...



Czechoslovakia pictorial roll cancellation, depicting antelope, used 27.8.1975

... and the lioness also watching our prey patiently ...



... we walk slowly in the different way to get our prey closer ...



... we have to be close to our prey before starting the attack ...

... the lioness stalk as close to their prey as they can, until about 20 meters and then launch an attack ...



... in other direction, we intercept our prey to surprise them ...



If our prey still baby, they sometimes walk alone and no aware ...



... we can easily get close to them and catch the baby prey



perf. on 2 side, from coil

After we eat our prey, we take a rest for a while



*** 1932, registered cover with advertisement postage meter, sent from Semarang Netherlands Indies 27.4.32 via New York 31.5.1932 to Toronto 2.6.1932. Rating surface 15 c and registered fee 20 c. Correct postage payment. Type Francotyp "C", horizontal shield-shaped frank with concave sides superimposed by smaller shields containing "CT". "NED-INDIE" at top, post horn at bottom. With 4-digit impression counter number high between TM and frank. Serie no 32 advertising Koffiebranderij De Leeuw, first use on 20.11.1931

PRESENTATION

3.1 My hunting experience - Hunting technique

The lionesses do the most of the hunting. Often the lionesses hunt together.
Several of them lie in wait downwind of a herd, while another one goes around the herd to the upwind side



When we join the hunting, we wait in the other side, surrounding the prey ...



Pictorial cancellation, replacement of permanent datestamp
Okaukuejo camp, in Etosha Game reserve

Our target is a group of zebras



Specimen

Typically, several lion work together and encircle the herd from different points ...



... once they have closed with a herd, they usually target the closest prey ...



... the attack is short and powerful; they attempt to catch the victim with a fast rush and final leap ...



... suddenly she breaks cover and chases the frightened zebras towards the other lionesses waiting in ambush

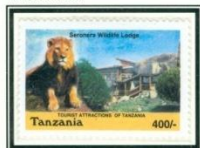


South Africa non denominated imprinted zebra stamp aerogramme for international mailing rate

PRESENTATION

5.1 Entertainment - Safari Park

A safari park is a zoo-like commercial tourist attraction where visitors can drive in their own vehicles and observe the wildlife, rather than viewing animals in cages or small enclosures.

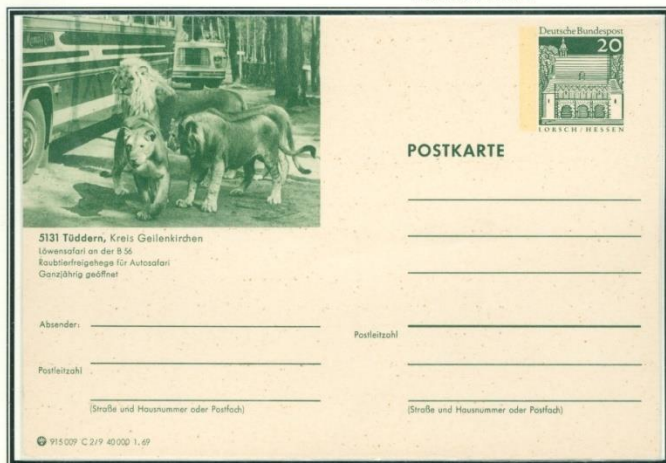


Pictorial Postmark

The first safari park is at Longleat.



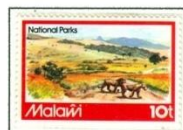
Pictorial Postmark



Postal Stationery Card, Germany 1969

7.4 Safari park main attraction

A safari park is a zoo-like commercial tourist attraction where visitors can drive in their own vehicles and observe the wildlife, rather than viewing animals in cages or small enclosures.

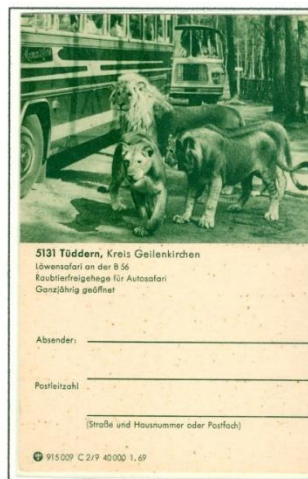


The main attractions are frequently large animals from Sub-Saharan Africa such as lions, rhinoceros, elephants, zebras, and antelope.

Lion is the most attractive animal in safari park.



Slogan pictorial postmark



Postal stationery card, Germany 1969

... a safari park, while larger than a zoo, is usually a very small area compared to game reserves in Africa.

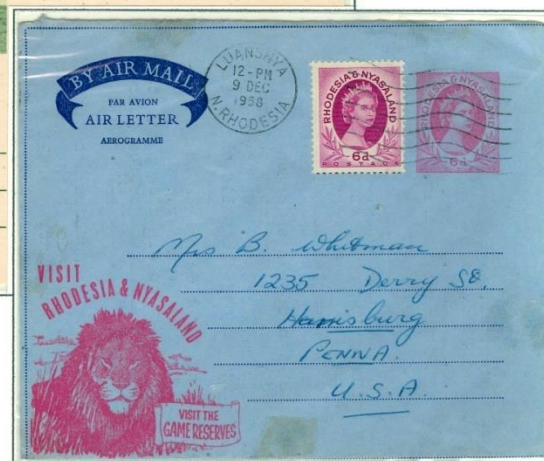


Commemorative pictorial postmark

... the first drive-through safari park outside of Africa opened in 1966 at Longleat in Wiltshire, England. Longleat, Windsor, Woburn and arguably the whole concept of safari parks were the brainchild of Jimmy Chipperfield (1912-1990)...



... Safari parks often have other associated tourist attractions: lodges, cafes/restaurants, and gift shops...



Postal stationery aerogramme, promoting the game reserve, updated to cover postage from North Rhodesia to USA 1958

PRESENTATION

9.4 Safari park main attraction

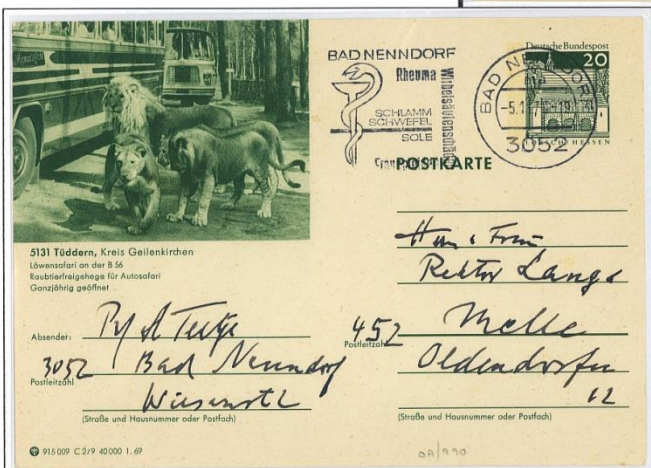
A safari park is a zoo-like commercial tourist attraction where visitors can drive in their own vehicles and observe the wildlife, rather than viewing animals in cages or small enclosures. Safari park usually used bigger area than our zoo, my son

The first drive-through safari park outside of Africa opened in 1966 at Longleat in Wiltshire, England. Longleat, Windsor, Woburn and arguably the whole concept of safari parks were the brainchild of Jimmy Chipperfield (1912-1990) ...



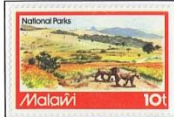
Commemorative pictorial postmark

visitors can drive in their own vehicles and observe the wildlife closely



Germany 20 Pfennig imprint PTPO card, used 5.1.1970

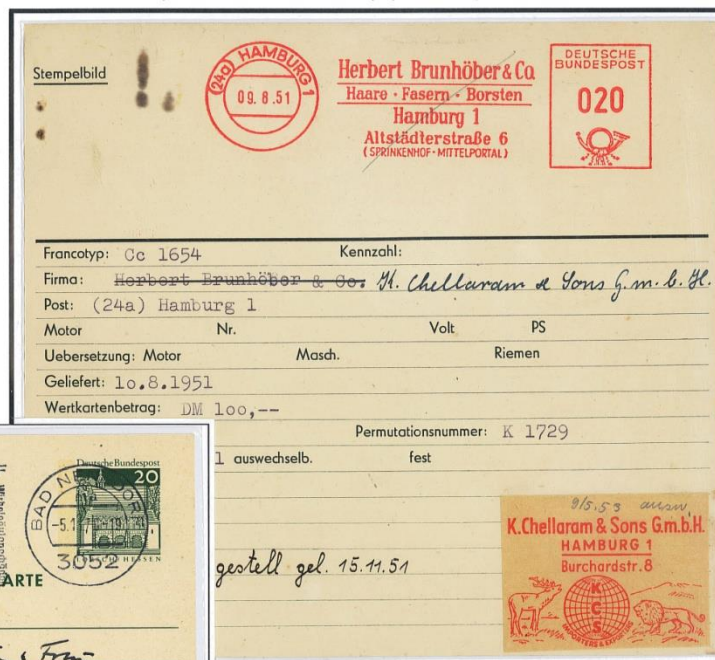
A safari park, while larger than a zoo, is usually a very small area compared to game reserves in Africa



Safari parks often have other associated tourist attractions: lodges, cafes/restaurants, and gift shops

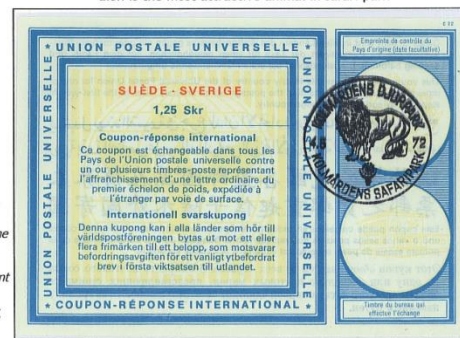


... in the safari park, we can see the lion and the prey at close range, but is limited by a safety wire



*** Archived card from German postage meter factory Francotyp, so called "stammkarte" for each of the meter machines they delivered. It documenting the history of a particular machines. If any changing (repair or replacement) of the three parts of the meter mark (value head, date stamp and advertising field) all documented in this card. See the changing advertisement picture note. Type Francotyp "C"

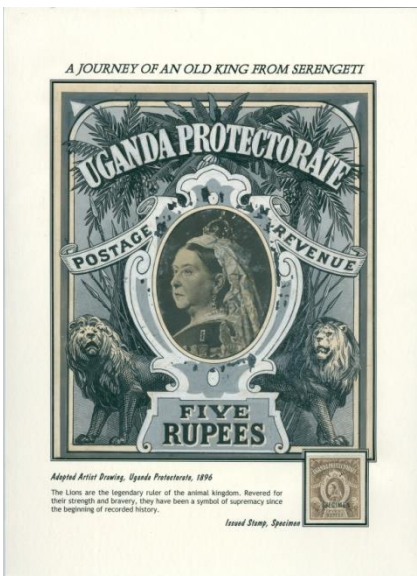
Lion is the most attractive animal in safari park



TITLE

THE KINGDOM OF LIONS

JOURNEY OF AN OLD KING FROM SERENGETI



A Journey of an Old King from Serengeti

Purpose of exhibit
To explore many aspects of the lion in a thematic format by showing not only typical lion material but thematic elements that will develop the story in a richer and more interesting fashion.

Scope of the Exhibit
This is story about lions. All aspects about lions, including history of lion, physical characteristics of lion, habitats and social community of lion, threats to lion, contribution and influence of lion in human world, including some aspect not directly related to lion as animal but still use term of lion and the fact is vital to protect lion. This exhibit demonstrate about the lion through a sharing experience story from an old lion who never for a long time from Serengeti to the new cub who is born in the zoo.

Treatment and Plan
The story is subdivided into 9 major sections and based upon the subject matter of each exhibit is going to be featured. Each section is functionally of equal importance and every attempt was made to address that equality in their development. Some aspects were quite difficult to display in a thematic manner and more abstract methods were used to more fully develop the story.

Philatelic Importance
A wide range of philatelic material is shown. Priority is given to highest philatelic importance: world class and high importance philatelic items (original artworks, essays, proofs and varieties); important postal history items (covers and other postal documents); philatelic studies are included when appropriate, and are labeled with thematic development.

The presentation
The presentation of the exhibit is also part of the development and treatment. The thematic text connects and explains the thematic qualification of the items and gives appropriate thematic information.
This text is used for thematic text and
- The text is used for philatelic text and
- Important philatelic information in this field.

Knowledge of subject
The exhibit was born in August (it's a lion), and based on its zodiac sign, he has been more than 7 years have interested to lion and read a lot of books and articles in internet related to lion. In trying to fully develop the story, the viewer will be exposed to many facts that are important to understand the subject yet are often challenging to find suitable elements. It took more than 10 years have been spent trying to acquire the material shown here.

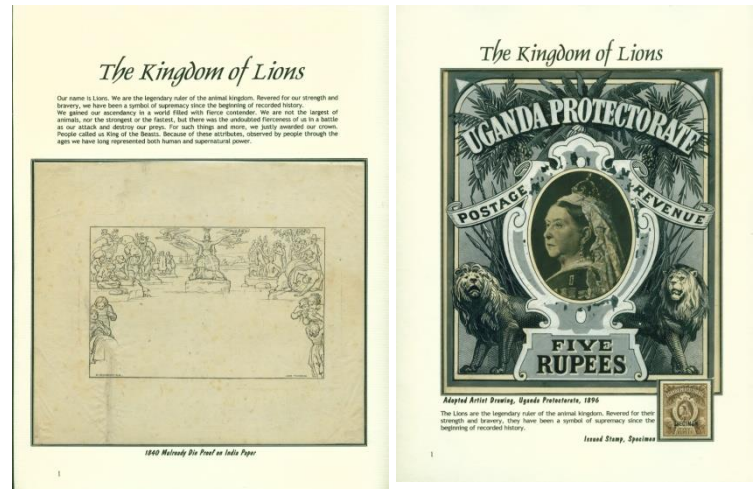
Thematic development
The lion is a well-known theme; this exhibit demonstrates a story approach as well as applying the material in a new way, utilizing the thematic information to its full extent. The most appropriate items are chosen, showing the connection between words and images in the elaboration of the theme. Personal studies have resulted in new material being included.

Barry
As one would expect the difficulty of acquisition is not necessary high for many items shown but is more greatest in trying to find the elements that will best develop the story line. There are some new items on display, most notably in the original artist drawing stamp of the biggest domination the Uganda Protectorate, issued in 1896, shown on page 28. Also some items especially original drawings, essay, some 19th century and early 20th century materials and others. All early items were marked with BOLD OUTLINE on display.

Recent development
The plan for the exhibit was totally revised in 2010. More than 50 philatelic items have been included or replaced during the last years.

EXHIBIT PLAN

Title and plan	Total Pages	Total Pages
1 Sweet memories	8	9
1.1 Meet in the zoo	1	
1.2 Remembering the homeland	1	
1.3 How is the new world	1	
2 Growing up in the homeland	9	
2.1 Growing up	1	
2.2 Why am I different with my daughter?	1	
2.3 How is the new world	1	
2.4 Growing up in the homeland	1	
2.5 How is the new world	1	
3 Feed the power	6	
3.1 Feeding experience	1	
3.2 How is the new world	1	
3.3 How is the new world	1	
3.4 How is the new world	1	
3.5 How is the new world	1	
4 The story of the king, not forever	9	
4.1 The story of the king, not forever	1	
4.2 The story of the king, not forever	1	
4.3 The story of the king, not forever	1	
4.4 The story of the king, not forever	1	
4.5 The story of the king, not forever	1	
5 New experience, join the circus	8	
5.1 New experience, join the circus	1	
5.2 New experience, join the circus	1	
5.3 New experience, join the circus	1	
5.4 New experience, join the circus	1	
5.5 New experience, join the circus	1	
6 Conclusion: Human loves lion	1	



Journey of an Old King from Serengeti

An old king from Serengeti is a symbolic name of lion, King of animals found widely at Serengeti National Park, Tanzania, Africa. This exhibit explores many aspects of lions in a thematic format by showing not only typical lion materials but also thematic elements that help develop the story in a richer and more interesting fashion.

Philatelic Importance
A wide range of philatelic material is shown. Priority is given to highest philatelic importance: world class and high importance philatelic items (original artworks, essays, proofs and varieties); important postal history items (covers and other postal documents); philatelic studies are included when appropriate, and are labeled with thematic development.

Barry
The difficulty of acquisition is not necessarily high for many items shown here, but the choice is more depending to the elements that will best develop the story line. There are some new items on display, most notably in the original artist drawing stamp of the biggest domination the Uganda Protectorate, issued in 1896, shown on page 28. Some items, especially adapted and un-adapted artist drawing, some 19th century and early 20th century materials and others are also placed shown. All items shown early and high importance early items were marked with BOLD OUTLINE on display. Degree of early items importance early items were marked with BOLD OUTLINE on display. Degree of early items importance early items were marked with BOLD OUTLINE on display. Degree of early items importance early items were marked with BOLD OUTLINE on display.

Recent development
The plan for the exhibit was totally revised in 2010. More than 50 philatelic items have been included or replaced during the last years.

EXHIBIT PLAN

Title and plan	Total Pages	Total Pages
1 Feedback, sweet memory of homeland	8	
1.1 Feedback, sweet memory of homeland	1	
1.2 Feedback, sweet memory of homeland	1	
1.3 Feedback, sweet memory of homeland	1	
1.4 Feedback, sweet memory of homeland	1	
1.5 Feedback, sweet memory of homeland	1	
2 Self learning in my homeland	9	
2.1 Self learning in my homeland	1	
2.2 Self learning in my homeland	1	
2.3 Self learning in my homeland	1	
2.4 Self learning in my homeland	1	
2.5 Self learning in my homeland	1	
3 Feed the power	9	
3.1 Feed the power	1	
3.2 Feed the power	1	
3.3 Feed the power	1	
3.4 Feed the power	1	
3.5 Feed the power	1	
4 The story of the king, not forever	9	
4.1 The story of the king, not forever	1	
4.2 The story of the king, not forever	1	
4.3 The story of the king, not forever	1	
4.4 The story of the king, not forever	1	
4.5 The story of the king, not forever	1	
5 New experience, join the circus	12	
5.1 New experience, join the circus	1	
5.2 New experience, join the circus	1	
5.3 New experience, join the circus	1	
5.4 New experience, join the circus	1	
5.5 New experience, join the circus	1	
6 Rest in the zoo	12	
6.1 Rest in the zoo	1	
6.2 Rest in the zoo	1	
6.3 Rest in the zoo	1	
6.4 Rest in the zoo	1	
6.5 Rest in the zoo	1	

Serengeti National Park is located in Tanzania (before named as Tanganyika), a British colony.

EXHIBIT PLAN

Title and plan	Total Pages	Total Pages
1 Feedback, sweet memory of homeland	8	
1.1 Feedback, sweet memory of homeland	1	
1.2 Feedback, sweet memory of homeland	1	
1.3 Feedback, sweet memory of homeland	1	
1.4 Feedback, sweet memory of homeland	1	
1.5 Feedback, sweet memory of homeland	1	
2 Self learning in my homeland	9	
2.1 Self learning in my homeland	1	
2.2 Self learning in my homeland	1	
2.3 Self learning in my homeland	1	
2.4 Self learning in my homeland	1	
2.5 Self learning in my homeland	1	
3 Feed the power	9	
3.1 Feed the power	1	
3.2 Feed the power	1	
3.3 Feed the power	1	
3.4 Feed the power	1	
3.5 Feed the power	1	
4 The story of the king, not forever	9	
4.1 The story of the king, not forever	1	
4.2 The story of the king, not forever	1	
4.3 The story of the king, not forever	1	
4.4 The story of the king, not forever	1	
4.5 The story of the king, not forever	1	
5 New experience, join the circus	12	
5.1 New experience, join the circus	1	
5.2 New experience, join the circus	1	
5.3 New experience, join the circus	1	
5.4 New experience, join the circus	1	
5.5 New experience, join the circus	1	
6 Rest in the zoo	12	
6.1 Rest in the zoo	1	
6.2 Rest in the zoo	1	
6.3 Rest in the zoo	1	
6.4 Rest in the zoo	1	
6.5 Rest in the zoo	1	

PLAN

EXHIBIT PLAN

	Exhibit Pages
TITLE, INTRODUCTION AND EXHIBIT PLAN	2
1. WHO ARE WE?	
1.1. Smilodon, Our Ancestor	1
1.2. The Descent of The Smilodon, Related to Us	1
1.3. Panthera Leo, Human Called Us Officially	1
2. GETTING CLOSED, KNOWING MORE ABOUT US	
2.1. Close Up	6
2.2. Special Characteristics	4
3. LIVING TOGETHER	
3.1. Where Do We Live?	2
3.2. Life Cycle	4
3.3. Social live	5
3.4. Built to Kill	6
4. INSPIRING THE WORLD	
4.1. Literature	3
4.2. Folklore	1
4.3. Mythology	
4.4. Astronomy	1
4.5. Astrology	1
4.6. Trying to be a Lion	2
5. LIVE IN HUMAN WORLD	
5.1. Lion in Art	12
5.2. Lion in Entertainment	9
5.3. Lion as Symbol	7
5.4. Lion that are No Lions at All	7
6. PEOPLE, FRIEND OR FOE?	
6.1. Threat, Getting Worsen	3
6.2. Survival, Need Your Help	2
	80

EXHIBIT PLAN

	Exhibit Pages
TITLE, INTRODUCTION AND EXHIBIT PLAN	2
1. HISTORY	
1.1. Smilodon, the Ancestor	1
1.2. The Descent of The Smilodon, Related to the Lion	1
1.3. <i>Panthera leo</i> , the Modern Lion	1
2. CLOSE UP	
2.1. Physical Anatomy	5
2.2. Physical Characteristic	4
2.3. Subspecies	2
3. LIVING TOGETHER	
3.1. Life Cycle	8
3.2. On the Art of Eating	6
3.3. Social Life	2
4. INSPIRING THE WORLD	
4.1. Trying to be a Lions	3
4.2. Lion Dance	1
4.3. Fables and Stories	4
4.4. Mythology	1
4.5. Bible	2
4.6. Astrology	1
4.7. Astronomy	1
4.8. Expression in Human World	3
5. UTILIZED IN HUMAN WORLD	
5.1. Entertainment	5
5.2. Commercial	2
5.3. Sport	2
5.4. Charity	1
5.5. Official / Government Representative	3
5.6. Coat of Arms	2
5.7. Peace Symbol	1
6. LION THAT ARE NO LIONS AT ALL	
6.1. It Looks Like With Lion's Mane	2
6.2. It Looks Like With Lion's Whiskers	1
6.3. It Looks Like With Lying Lion	1
6.4. It Looks Like Brave-heart of Lion	2
6.5. It Looks Like Nothing With Lion	3
7. LION IN DANGER	
7.1. The Human Purpose threat	2
7.2. When Predator Became Prey	2
8. CONSERVATION EFFORT	
8.1. Global	2
8.2. Direct	1
	80

PLAN

EXHIBIT PLAN

	Exhibit Pages
TITLE, INTRODUCTION AND EXHIBIT PLAN	2
1. WHO AM I ?	
1.1. Smilodon, the Ancestor	1
1.2. The Descent of The Smilodon, Related to the Lion	1
1.3. <i>Panthera leo</i> , the Modern Lion	1
2. THE KING'S CLOSE UP	
2.1. Physical Anatomy	5
2.2. Physical Characteristic	4
2.3. Subspecies	2
3. LIVING WITH THE KING	
3.1. Life Cycle	8
3.2. On the Art of Eating	6
3.3. Social Life	2
4. I AM INSPIRING THE WORLD	
4.1. Trying to be a Lions	3
4.2. Lion Dance	1
4.3. Fables and Stories	4
4.4. Mythology	1
4.5. Bible	2
4.6. Astrology	1
4.7. Astronomy	1
4.8. Expression in Human World	3
5. UTILIZED IN HUMAN WORLD	
5.1. Entertainment	5
5.2. Commercial	2
5.3. Sport	2
5.4. Charity	1
5.5. Official / Government Representative	3
5.6. Coat of Arms	2
5.7. Peace Symbol	1
6. HEY, THERE ARE LION THAT ARE NO LIONS AT ALL	
6.1. It Looks Like With Lion's Mane	2
6.2. It Looks Like With Lion's Whiskers	1
6.3. It Looks Like With Lying Lion	1
6.4. It Looks Like Brave-heart of Lion	2
6.5. It Looks Like Nothing With Lion	3
7. NOW I AM IN DANGER	
7.1. The Human Purpose threat	2
7.2. When Predator Became Prey	2
8. THANKS FOR TRYING TO HELP ME	
8.1. Global	2
8.2. Direct	1
	<hr/>
	80



PLAN

EXHIBIT PLAN

Title and plan	Total Pages		Total Pages
	1	6 Rest in the zoo	9
1 Sweet memories	8	6.1 Hey, there are a lot of kind lions in zoo	
1.1 Rest in the zoo		6.2 Also have new "real lion" friends	
1.2 Remembering the homeland		6.3 Object of the research	
1.3 Born in the new world		6.4 Learning the history from scientist	
		6.5 Looking to the stars	
2 Growing up in the homeland	9	7 First lesson, lion is a charming entertainer and model	8
2.1 Growing up		7.1 Zoo point of interest	
2.2 Why I am different with my daughter?		7.2 Circus star	
2.3 I have similiraty too		7.3 Film industry icon	
2.4 Knowing further my ability		7.4 Safari	
3 Feel the power	8	7.5 Cartoon / animation actor	
3.1 Hunting experience		7.6 Model of painting	
3.2 Young adult generation		7.7 Model of sculpture and statuary	
		7.8 Model of ornament	
4 The Glory of the king, not forever	9	8 Second lesson, human like us, they used lion as symbol	11
4.1 Process to be a king		8.1 Commercial	
4.2 The king's job		8.2 Sport	
4.3 The king's facility		8.3 Charity	
4.4 Threat to the king		8.4 Government	
4.5 Disaster coming		8.5 Coat of arms / heraldry	
		8.6 Peace	
5 New experience, join the circus	8	9 Third lesson, lion has inspire the world	8
5.1 Learning to be entertainer		9.1 Trying to be a Lion	
5.2 Traveling around Asia		9.2 Lion dance	
5.3 Traveling Around Europe		9.3 Fables and stories	
5.4 Traveling around America		9.4 Mythology	
5.5 The best achievement		9.5 Bible	
5.6 Injured			
		10 Conclusion : Human loves lion	1



PLAN

EXHIBIT PLAN

Title and plan	Total Pages		Total Pages
	1	6.2 Also have a new "real lion" friends	
		6.3 Object of the research	
		6.4 Learning the history from a scientist	
		6.5 Looking to the stars	
		6.6 Building new family	
1 Flashback, sweet memory of homeland	8	7 First lesson to my son, lion has inspire the world	12
1.1 Laying down on the grass with my family		7.1 Pretender to the throne	
1.2 Remembering my homeland		7.2 Lion dance	
1.3 The little lion cub		7.3 Fables and stories	
1.4 Growing up		7.4 Mythology	
1.5 My family		7.5 Bible	
		7.6 Expression in human world	
2 Self learning in my homeland	9		
2.1 I am different with my daughter		8 Second lesson to my son, human like us, they used lion as a symbol	15
2.2 I have similiraty too		8.1 Government	
2.3 Knowing further my ability		8.2 Heraldry	
		8.3 Peace	
3 Feel the power	9	8.4 Charity	
3.1 My hunting experience		8.5 Commercial	
3.2 Differentiation duties and obligations		8.6 Sport	
3.3 Process to be a king			
4 The glory of the king, not forever	9	9 Third lesson to my son, lion is a charming entertainer	5
4.1 The crowning glory		9.1 Zoo pint of interes	
4.2 The king's job		9.2 Circus star	
4.3 The king's privilage		9.3 Film star	
4.4 Threat to the king		9.4 Safari	
4.5 Disaster coming		9.5 Cartoon / animation actor	
5 New experience, join the circus	12		
5.1 Learning to be entertainer		10 Fourth lesson to my son, human loves Lion, they protect us	4
5.2 Prepare for around the world tour		10.1 Education	
5.3 Traveling around Asia		10.2 World Wide Fund for Nature (WWF)	
5.4 Traveling around Europe		10.3 Global campaign endangered species	
5.5 Traveling around America		10.4 The development of national park	
5.6 The best achievement			
5.7 Injured			
6 Rest in the zoo	12		
6.1 Hey, there are a lot of kind lions in zoo			
		TOTAL	96
			1



CONNECTING THEMATIC TEXT AND MATERIAL



"What you see now is only
HALF SIDE of my life"



* Variation, freak on stamp, a piece of paper covered on the stamp paper at printing process, so the color did not print partially on stamp

... some animals bolt and dash quickly out of reach ...



** Proof with
punch control hole



** Proof with
punch control hole

... our lack of stamina makes
me incapable of long, hard
pursuits ...



... and we must
take a rest for a
while to recover

CONNECTING THEMATIC TEXT AND MATERIAL

...I have 5 cubs, they look similar but I can recognize them all



Benin 1976 trial color proof, in basic colors and combination color



RESEARCH FOR PHILATELIC KNOWLEDGE

5.3 Traveling Europe

When we visited Tuscany, my heart beating wildly. This is the place where the lion was first captured as a stamp design.
Lion of Tuscany is known throughout the world as the first postage stamp with lion design in the world. The stamps issued on 1851



First issue 1851
1d black



Forgery
1d black
on bright blue
white paper



1851, 1s lemon
on bright blue
paper (e)



1851, 1s orange
on grey paper
(e)



First issue 1851, 1c on bright blue paper,
crown watermark



Second issue 1857, 1c on grey paper,
cross wave watermark

In this period,
lion of Tuscany
stamps is issued in
many variation and
used in many
cancellation. Some
example can be
seen as follows :



light blue on
grey paper



light blue on
blue paper



dark blue on
blue paper



blue on grey
paper



green on grey
paper



argyle canc.



circular canc.



straight line
canc.



PD in box
canc.



PD canc.



double
circular canc.



Folded letter, with 2 cz on bright blue paper (x3) Lion of Tuscany issued on 1851,
sent from Firenze 14 April 1857 to Piacenza (e)

My heart is getting shocked, that I was told that the lion of Tuscany is not the first stamp with lion design in the world

Lion of Tuscany issued in 1851.

Turns in 1850, in Hannover Germany, has been issued a postage stamp with lion design in it

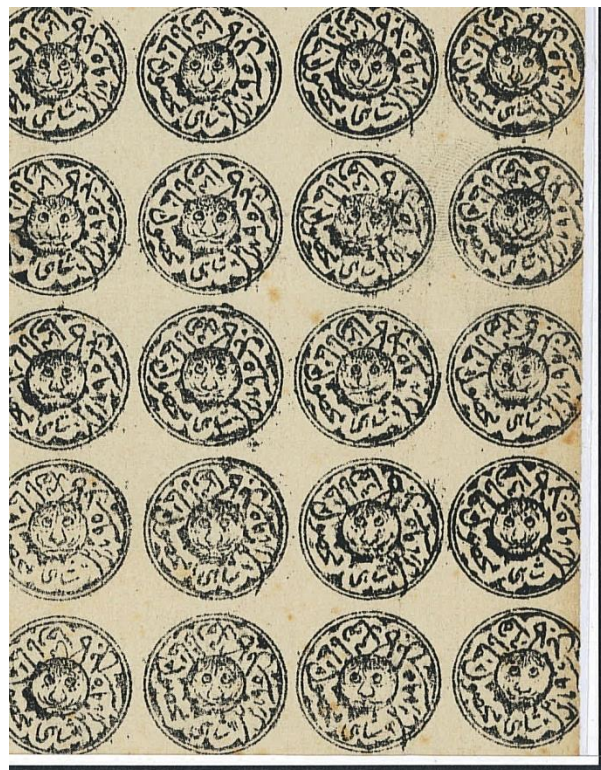


First issue 1850

So the first postage stamp
with lion design in the world
is stamp from Hannover, issued 1850



RESEARCH FOR THEMATIC KNOWLEDGE



te sheet of 40 TASHKURGHAN 1 Shahi values, plate A in black



*** 1878 block of 24 KABUL 1 Sanar values, position 12 - 35 plate B in grey - green



1 Abasi grey - green
Position no 9



1/2 Rupee grey - green
Position no 2



1 Rupee grey - green
Position no 5

Let us momentarily digress to discuss the use of "Tiger Head"
to describe these stamps

In Dari and Urdu "sher" means lion

Dari is one of the main languages spoken in Afghanistan

Urdu is used in areas adjacent to Afghanistan

In Hindi "sher" means tiger

Hindi is not spoken in this area but in other areas of Pakistan and India

Perhaps the early English collectors of Afghan stamps

and their perhaps closer association with Hindi

may have resulted in this Sher Ali stamp being called Tiger Heads

Rather than renaming them Lion Heads

they will continue to be referred to as Tiger Head issues

*Under Sher Ali a new series of stamps was issued each year,
the circular central design of which was a variant of the original Lion Head.*

"New" issues were printed each year probably because the impressions on the stone wore out rather than a conscious decision to issue a new stamp each year

**HAPPY
COLLECTING**

THANK YOU

